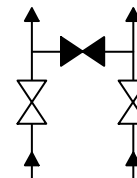
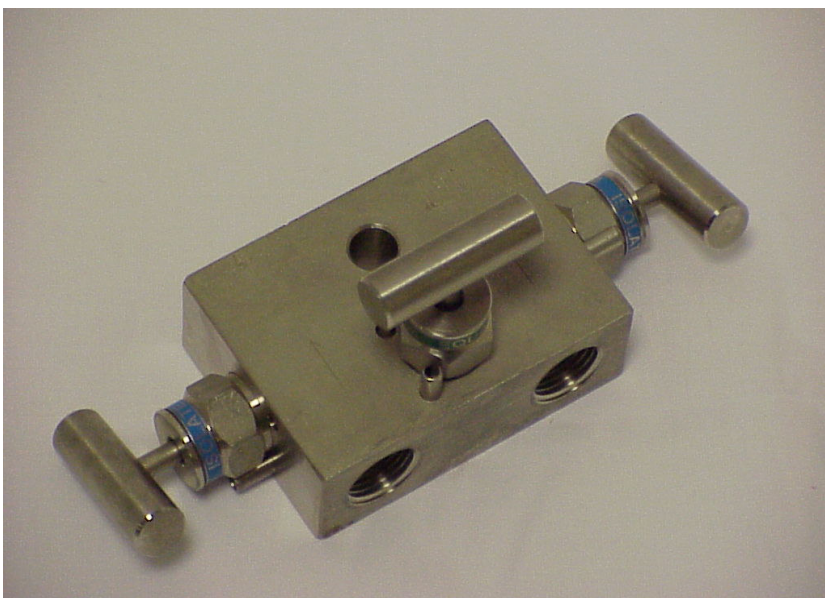




# Model 307



**PICTURE MODEL: 307-06**  
**3-VALVE MANIFOLD FOR REMOTE MOUNTING ON DIFFERENTIAL PRESSURE TRANSMITTER HAVING 54 MM CENTRES**

<b>Standard materials</b>				
Body, Bonnet	AISI 316 L			
Needle point	Rotating ceramic ball Al <sub>2</sub> O <sub>3</sub>			
Stem	AISI 316 Ti with chromium-carbide diffusion coating			
<b>Connections</b>				
Process	2 x 1/2-14 NPT (F)		ANSI / ASME B1.20.1	
Instrument	2 x 1/2-14 NPT (F)		ANSI / ASME B1.20.1	
<b>Stem packing</b>	<b>Code</b>	<b>P/T</b>		<b>Material</b>
Teflon (PTFE)	xxx-01	413 barg 38°C 200 barg 230°C 6000 psig 100°F 3000 psig 450°F		AISI 316 (L)
VITON	xxx-06	600 barg 38°C 200 barg 200°C 9000 psig 100°F 3000 psig 400°F		AISI 316 (L)
Grafoil	xxx-05	413 barg 38°C 200 barg 400°C 6000 psig 100°F 3000 psig 750°F		AISI 316 (L)
Other packingmat.	Sillicon, Kalrez, Supagraf Premier, EPDM, Elast-o-lion			
<b>Special alloys</b>	<b>Alloy 400</b>	<b>Alloy C-276</b>	<b>TITAN</b>	<b>DUPLEX 1.4462</b>
Model	xxx-02	xxx-03	xxx-04	xxx-20
Stem packing	PTFE	PTFE	PTFE	VITON O-ring
	<b>Alloy 825</b>	<b>Alloy 625</b>	<b>Alloy 254Smo (6M0)</b>	
Model	xxx-12 (825)	xxx-12	xxx-11	Other on request
Stem packing	PTFE	PTFE	PTFE	
<b>Optional</b>				
Oxygen cleaned	xxx-xx/C			
G-threaded connections	xxx/B -xx			
All connections G-threaded ¼	xxx/B14-xx			
10.000 psi solution	xxx/10K-xx			
Stem material Monel K500 (NACE MR-01-75 compliant)	xxx-xx5			
Mounting bracket	904, 906 or 906/P			

# Model 307

