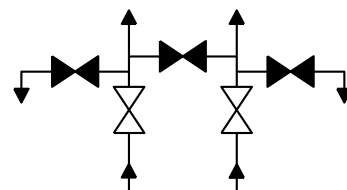




# Model 543

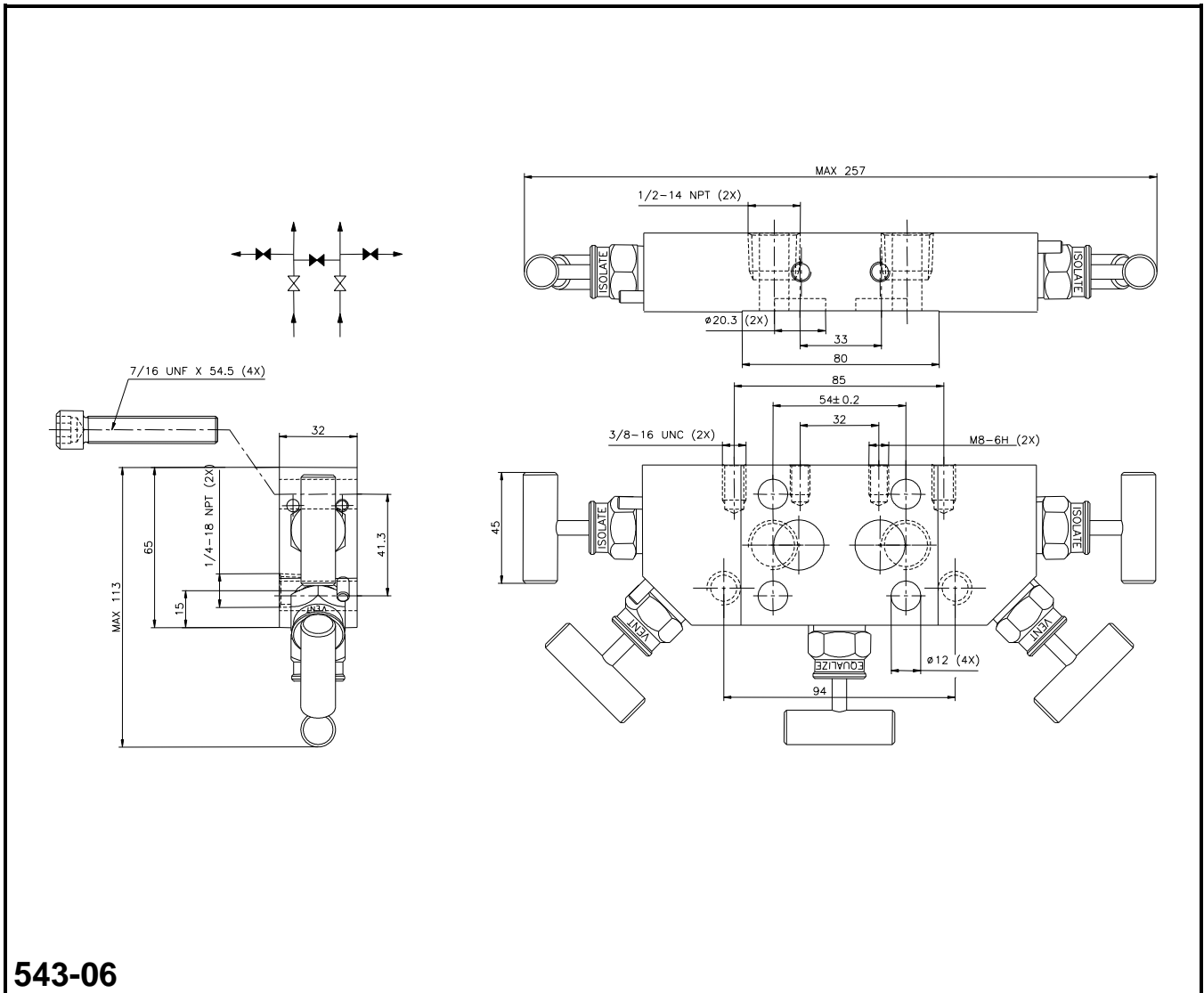


## PICTURE MODEL 543-06

5-VALVE MANIFOLD FOR DIRECT MOUNTING ON ROSEMOUNT 3051  
DIFFERENTIAL PRESSURE TRANSMITTER WITHOUT CO-PLANAR FLANGE

<b>Standard materials</b>				
Body, Bonnet		AISI 316 L		
Needle point		Rotating ceramic ball Al <sub>2</sub> O <sub>3</sub>		
Stem		AISI 316 Ti with chromium-carbide diffusion coating		
<b>Connections</b>				
Process		2 x 1/2-14 NPT (F)	ANSI / ASME B1.20.1	
Instrument		Flanged	Integral c-to-c 33 mm	
Vent / Purge		2 x 1/4-18 NPT (F)	ANSI / ASME B1.20.1	
<b>Instrument mounting material</b>				
4 Bolts 7/16" UNF		AISI 316		
<b>Stem packing</b>	<b>Code</b>	<b>P/T</b>		<b>Material</b>
Teflon (PTFE)	xxx-01	413 barg 38°C 6000 psig 100°F	200 barg 230°C 3000 psig 450°F	AISI 316 (L)
VITON	xxx-06	413 barg 38°C 6000 psig 100°F	200 barg 200°C 3000 psig 400°F	AISI 316 (L)
Grafoil	xxx-05	413 barg 38°C 6000 psig 100°F	200 barg 230°C 3000 psig 450°F	AISI 316 (L)
Other packingmat.	Sillicon, Kalrez, Supagraf Premier, EPDM, Elast-o-lion			
<b>Optional</b>				
Oxygen cleaned				xxx-xx/C
G-threaded connections				xxx/B -xx
All connections G-threaded ¼"				xxx/B14-xx
Vent ½"NPT F (standard is ¼"NPT F)				xxx/V12-xx
Mounting bracket				906 or 906/P
<b>Special alloys</b>	<b>Alloy 400</b>	<b>Alloy C-276</b>	<b>TITAN</b>	<b>DUPLEX 1.4462</b>
Model	xxx-02	xxx-03	xxx-04	xxx-20
Stem packing	PTFE	PTFE	PTFE	VITON O-ring
	<b>Alloy 825</b>	<b>Alloy 625</b>	<b>Alloy 254Smo (6M0)</b>	
Model	xxx-12 (825)	xxx-12	xxx-11	Other on request
Stem packing	PTFE	PTFE	PTFE	

# Model 543



**543-06**

