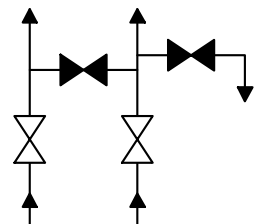
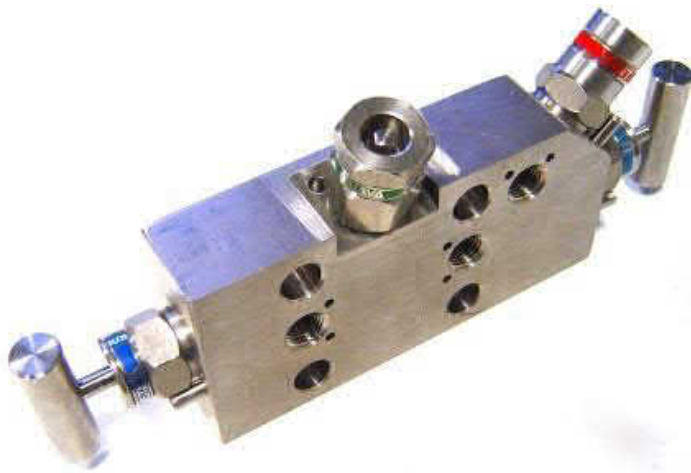




Model 492



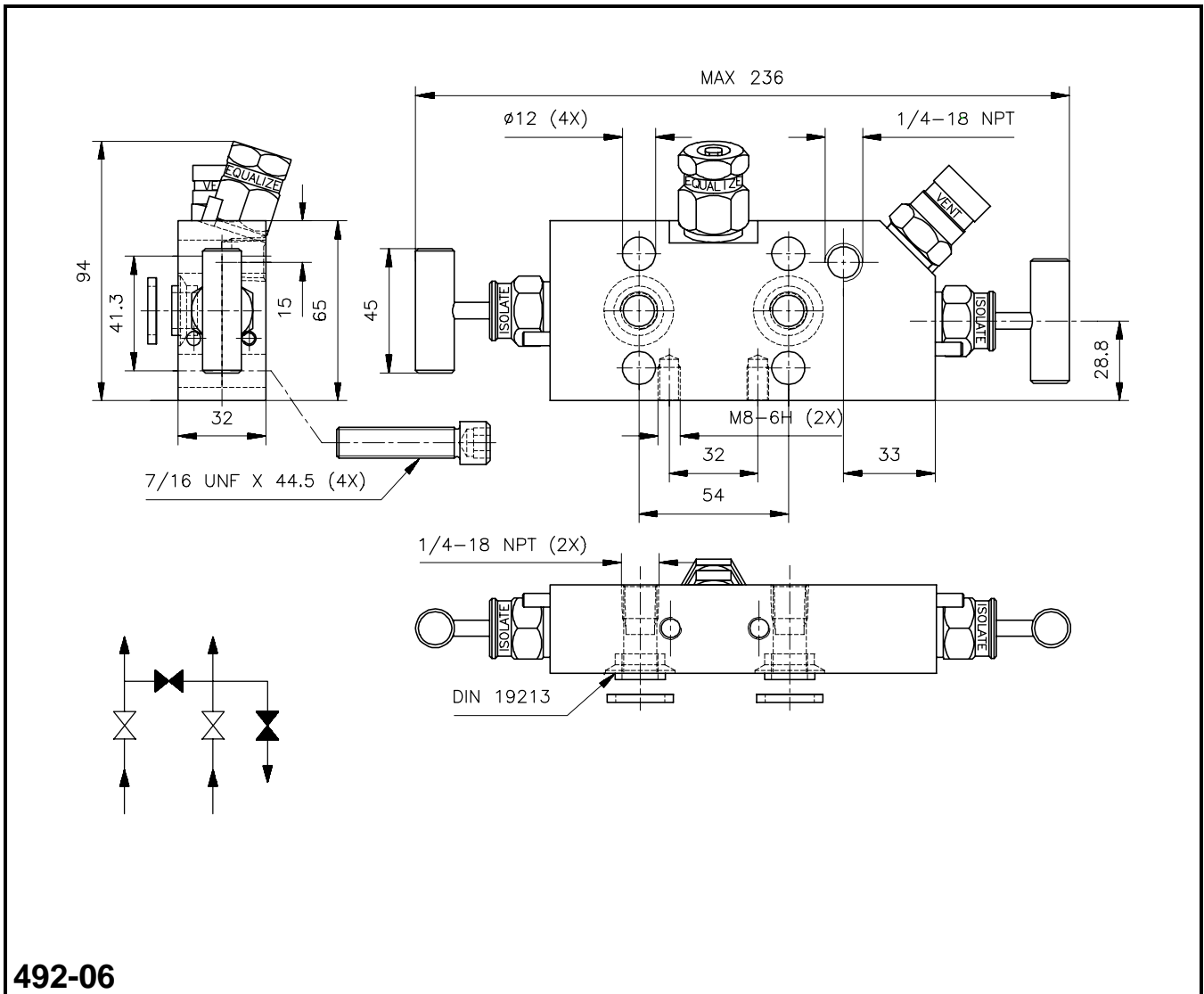
492-06

4-WAY MANIFOLD FOR DIRECT MOUNTING ON DIFFERENTIAL PRESSURE TRANSMITTER WITH IEC61518-A CONNECTION

Standard materials				
Body, Bonnet	AISI 316 L			
Needle point	Rotating ceramic ball Al ₂ O ₃			
Stem	AISI 316 Ti with chromium-carbide diffusion coating			
Connections				
Process	2 x 1/4-18NPT(F)	ANSI / ASME B 1.20.1		
Instrument	Flanged	IEC61518-A		
Vent / Purge	1/4-18NPT(F)	ANSI / ASME B1.20.1		
Instrument mounting material				
2 Gaskets	PTFE			
4 Bolts 7/16" UNF	AISI 316			
Stem packing				
	PTFE	GRAFOIL nuclear quality	VITON O-ring	
<i>Model</i>	492-01	492-05	492-06	
<i>Operating pressure / temperature rating</i>	413 barg 38°C 6000 psig 100°F 200 barg 230°C 3000 psig 450°F	413 barg 38°C 6000 psig 100°F 200 barg 400°C 3000 psig 750°F	413 barg 38°C 6000 psig 100°F 200 barg 200°C 3000 psig 400°F	
Optional				
Oxygen cleaned				xxx-xx/C
Connectors 3/8"OD (PA = Parker, GY = Gyrolok, SL = Swagelok)				xxx-xx/SL38
Connectors 10 mm OD (PA = Parker, GY = Gyrolok, SL = Swagelok)				xxx-xx/SL10
Extra's				
Anti tamper key				<i>Model</i> 59.003
Mounting bracket				906 or 906/P
Special alloys				
	Alloy 400	Alloy C-276	TITAN	DUPLEX 1.4462
<i>Model</i>	xxx-02	xxx-03	xxx-04	xxx-20
<i>Stem packing</i>	PTFE	PTFE	PTFE	VITON O-ring
	Alloy 825	Alloy 625	Alloy 254Smo (6M0)	
<i>Model</i>	xxx-12 (825)	xxx-12	xxx-11	Other on request
<i>Stem packing</i>	PTFE	PTFE	PTFE	

© Trademark Swagelok Corporation

Model 492



492-06

